



6th Meeting of the CAREC Working Group on Health

Addressing Climate Change and Health to Enhance Regional Health Security

7-9 April 2025 | Bishkek, Kyrgyz Republic



PANEL: Panel on enhancing climate resilience in the health sector



Sharshenova Ainash Akynovna
Doctor of Medical Sciences, Professor,
Chief Researcher, National Institute of
Public Health, Ministry of Health of the
Kyrgyz Republic



Vladimir Kendrovski
Technical Officer (Climate Change
and Health) WHO Regional Office
for Europe, European Centre for
Environment and Health



Tamar Khomasuridze
Sexual and Reproductive Health
Regional Advisor
United Nations Population Fund



Kirthi Ramesh
Social Sector Specialist,
ADB (Moderator)



Olga Pavlovna Mirshina
Chief Specialist, Committee for Sanitary and
Epidemiological Welfare and Public Health,
Ministry of Health of the Republic of Uzbekistan



Nataly Olofinskaya
Technical Advisor on Climate Change
Adaptation
United Nations Development
Programme



Swati Mahajan
Senior Climate Change and Health
Specialist
ADB



Kristian Rosbach
Senior Economist
(Regional Cooperation),
ADB (Moderator)



6th Meeting of the CAREC Working Group on Health

The Draft Minimum Requirements for Climate-Resilient Health Facilities



Session objectives

- Brief on the purpose and scope of the draft minimum requirements.
- There is a common understanding of the challenges that climate hazards present to health facilities.
- Provide an overview of the draft minimum requirements to inform the workshop sessions.
- Interactive workshop session to:
 - Gather feedback on the draft requirements to inform further development.
 - Gain an understanding of variations in priorities and challenges across the CAREC countries.

Purpose & Scope of the Minimum Requirements

Purpose:

- To guide stakeholders in developing and maintaining **health facilities** that are **resilient to climate impacts** and capable of **delivering continuous and effective health services** in a changing climate.

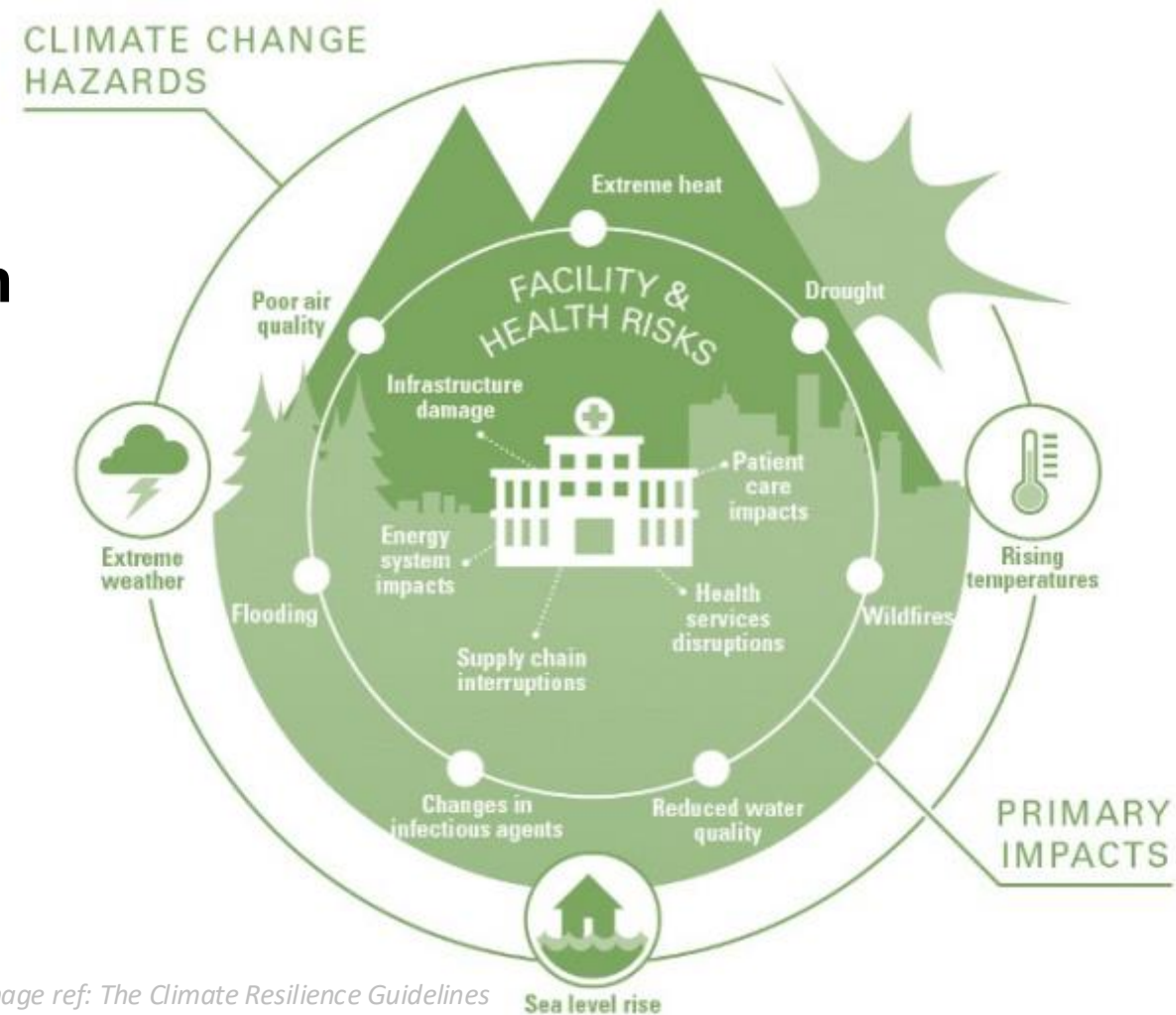


Image ref: The Climate Resilience Guidelines for BC Health Facility Planning & Design

Purpose & Scope of the Minimum Requirements

Scope: Requirements to enhance resilience:

OF:

- Healthcare **facilities** (not the whole health system)

TO:

- be able to be prepared for, respond to, recover from, and adapt to **climate-related shocks and stresses**. (e.g. flooding, extreme heat, extreme cold, tropical cyclones).

*Many other features which contribute to **high quality design of healthcare facilities** which should be considered alongside these requirements.*

Requirements are structured against **five** health facility **asset types**



Buildings Infrastructure



Equipment & Products



WASH & Waste



Energy



Systems and Processes

Climate Hazards in CAREC Countries



Benefits and Drivers of Designing Health Facilities for Climate Resilience



Increasing
Frequency and
Intensity of
Climate-Related
Hazards



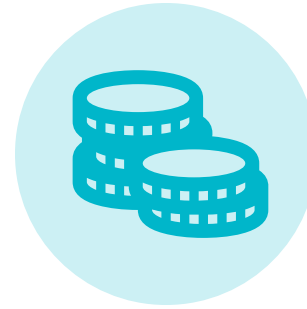
Health System
Vulnerability



Regulatory
and Policy
Requirements



Improved Health
Outcomes



Cost Savings



Community Trust
and Safety

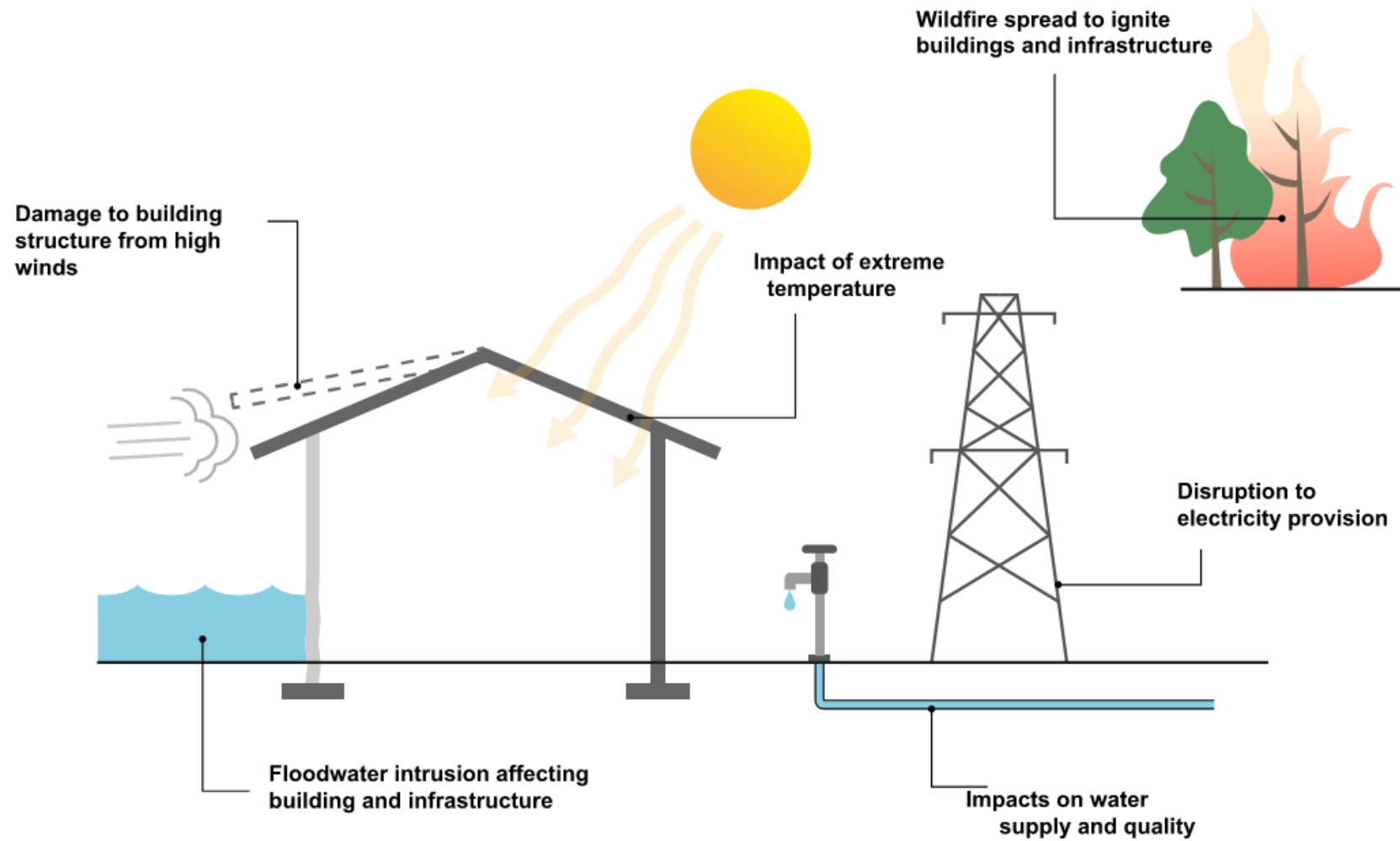
Menti Exercise



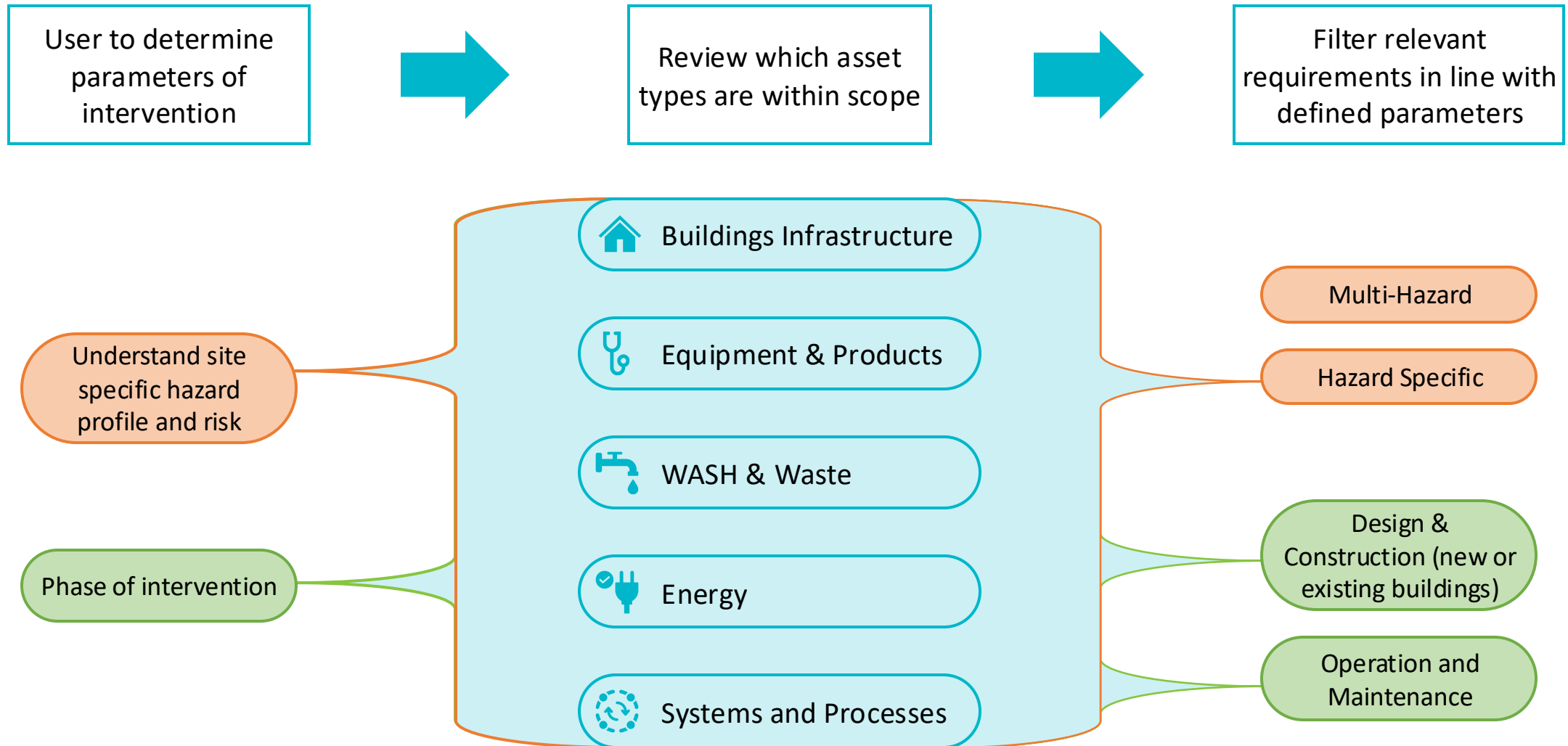
Go to Menti.com on your mobile device and add code 2573 0497

Or scan QR code

Impacts of Climate Hazards on Health Facilities



Structure of the Requirements & How to Use





Overview of the Requirements for Buildings Infrastructure

Buildings Infrastructure refers to the physical structures and facilities that house healthcare services. It includes the design, construction, and maintenance of buildings such as hospitals, clinics, and laboratories.

- Use of climate hazard data in design
- Building Design and Construction
- Infrastructure and Systems Integration
- Fire Safety and Prevention
- Sustainable and resilient Landscaping
- Reduction of heat gain
- Emergency Preparedness and Response
- Structural Integrity and Maintenance
- Utility and Service Management



Overview of the Requirements for Equipment and Products

Equipment and Products encompasses all the tools and devices necessary for healthcare delivery. It includes:

- **Medical Equipment:** Devices used for diagnosis, treatment, and monitoring of patients (e.g., MRI machines, ventilators).
- **IT Infrastructure:** Systems for managing patient data, electronic health records, and telemedicine services.
- **Essential Tools:** Other necessary items like surgical instruments, laboratory supplies, and personal protective equipment (PPE).

- Equipment and Supplies Security
- Essential Supplies Storage
- Inventory Management
- Backup Arrangements
- Cold chain requirements
- Staff Training
- Preventive Maintenance
- Emergency Testing
- Supply Chain Planning
- Server Placement



Overview of the Requirements for Energy

Energy infrastructure in health facilities ensures a reliable and sustainable power supply. This includes:

- Electricity: For lighting, medical equipment, and IT systems. Prevent overloading during high demand periods and mitigate impact of power outages.
- Backup Power: Generators and alternative energy sources to maintain operations during outages.

- Hybrid Energy Systems
- Backup Energy Plans
- Decentralized Renewable Energy
- Solar Water Heaters
- Natural Ventilation
- Infrastructure Assessment
- Voltage Stabilizers
- HVAC Assessment
- Energy Audits
- Monitoring Devices



Overview of the Requirements for WASH & Waste

WASH stands for Water, Sanitation, and Hygiene. This aspect covers:

- Water Supply: Ensuring clean and safe water for drinking, sanitation, and medical use.
- Sanitation: Proper facilities for waste disposal and sewage management.
- Hygiene: Practices and infrastructure to maintain cleanliness and prevent infections.
- Waste Management: Systems for disposing of medical and non-medical waste safely and sustainably.

- Water Reserves and Emergency Supply
- Drainage Systems
- Improved Waste Storage
- Climate-resistant Waste Pits
- Water Quality Monitoring
- Health Workforce Training
- Waste Storage Access
- Waste Stream Knowledge
- Waste Transport Management



Overview of the Requirements for Systems & Processes

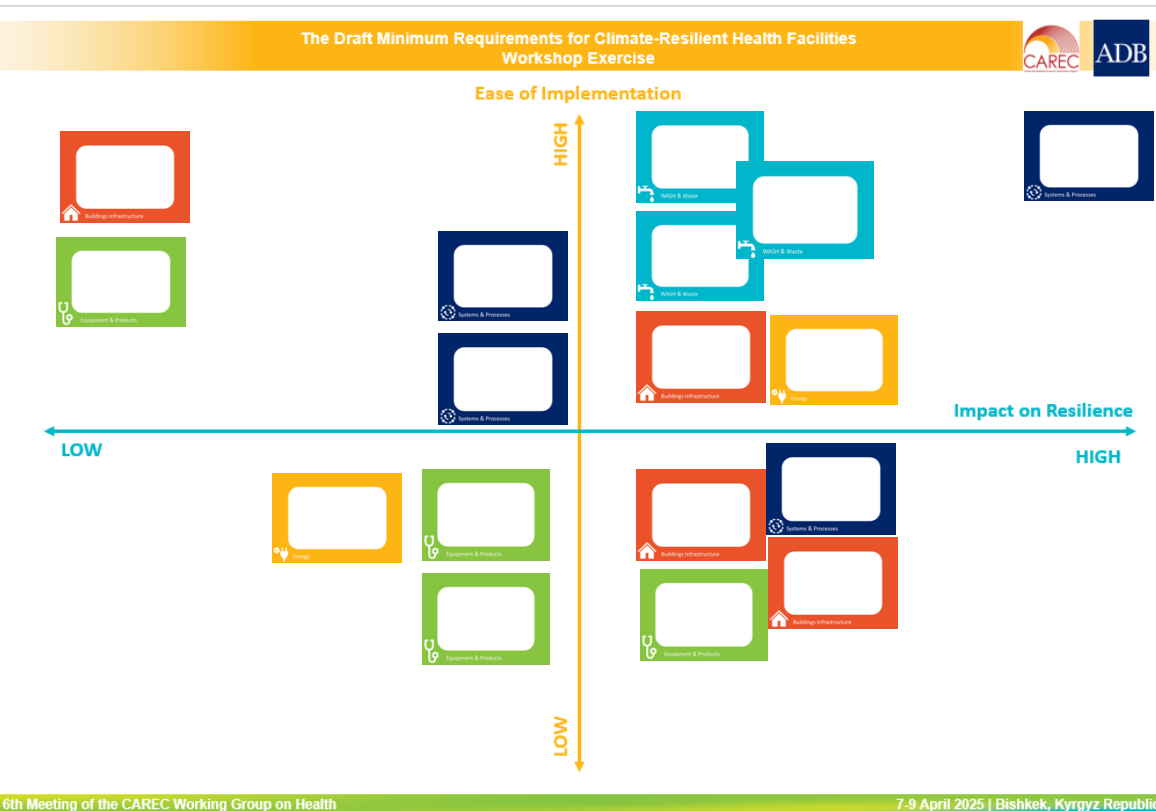
Systems & Processes includes the operational frameworks that support the health facility operation:

- Maintenance processes: routine upkeep of facility assets.
- Disaster risk management: planning for during and immediately extreme weather events.
- Operational Systems: Procedures and protocols required within the facility which support patient care, staff management, and facility maintenance.

- Appropriate clinical space allocation
- Early Warning Systems
- Disaster Risk Reduction Plans
- Security and Evacuation Plans
- Post-Disaster Support
- Rapid Clean-Up and Recovery
- Health workforce training in disaster response.
- Contingency transportation and staff redistribution
- Medical Records Storage

Workshop Session

- Objective – to prioritize the draft list of requirements
- 45 mins in total for the exercise
 - 30 mins – group discussion in tables
 - 15 mins – one person from each table to feed back to the room – what did you spend the most time talking about in your group and why?
- Activity:
 - In groups, place the requirement cards onto the matrix considering each requirement's **impact on resilience** (low/high) versus **ease of implementation** (low/high).



Next steps

- Please share additional feedback by **Tuesday 29 April 2025 (3 weeks)**.
- We will consider your feedback and revise the Minimum Requirements by **Friday 16 May 2025**.
- Present two deliverables at Senior Officials Meeting (SOM) **17-19 June 2025** (circulate a month prior)
- Send the deliverables for review prior to National Focal Points Meeting by **August 2025**
- Table deliverables to Ministerial Conference in **November 2025**

Thank you



Visit CAREC Health website: <https://health.carecprogram.org/>